

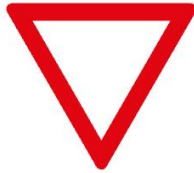
TRAFFIC SIGNS AND THEIR MEANING



REGULATORY SIGNS (75)



St. Andrew's Cross



Give way



Stop. Give way



208 Priority of oncoming traffic



Prescribed direction of travel right



Prescribed direction of travel straight ahead



Prescribed direction of travel here right



Roundabout



One Way Street



Mandatory passing on the right



Drive On Shoulder Too



No more driving on the hard shoulder



Leave The Shoulder



Bus stop for public transport and school buses



Taxi stand



Cycle Path



Bridleway



Sidewalk



Shared pedestrian
and cycle path



Separate cycle and
pedestrian path



Beginning of a
pedestrian zone



End of a pedestrian
zone



Start of a bicycle
street



End of a bicycle
street



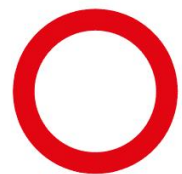
Start of a bicycle
zone



End of a bicycle zone



Dedicated Bus Lanes



Ban on all types of
vehicles



Ban on motor
vehicles and other
multi-lane motor
vehicles



Ban on motor
vehicles over 3.5 t



Ban on cycling



Ban on motorcycles,
including those with
sidecars, mopeds
and mopeds



Ban on mopeds



Ban For Riders



Prohibition For
Pedestrians



Ban on motor
vehicles



Prohibition of motor
vehicles carrying
dangerous goods
that require labeling



End of a pedestrian
zone



Prohibition for
vehicles exceeding
the stated actual
axle load



Prohibition for vehicles
exceeding the specified
actual width



Prohibition for vehicles
above the specified
actual height



Prohibition for
vehicles exceeding
the stated actual
length



No Entry



Snow chains required



Prohibition for
vehicles with water-
polluting cargo



Start of a traffic ban
zone to reduce
harmful air pollution
in a zone



End of a traffic ban
zone to reduce
harmful air pollution
in a zone



Prohibition of turning



Prohibition of falling below the specified minimum distance



Maximum Permitted Speed



Start Of A 30 Km/H Zone



Ban on End of a 30 km/h zone



Prescribed minimum speed



Overtaking prohibited for all types of motor vehicles



Overtaking ban for motor vehicles over 3.5 t



Prohibition of overtaking single-track vehicles for multi-track motor vehicles and motorcycles with sidecars



Prohibition for vehicles above the specified actual height



End of the prescribed minimum speed



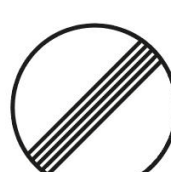
End Of The Overtaking Ban For All Types Of Motor Vehicles



End of the overtaking ban for motor vehicles over 3.5 t



End of the ban on overtaking single-track vehicles for multi-track motor vehicles and motorcycles with sidecars



End of all route-related speed limits and overtaking bans



Absolute no-stopping zone



Restricted stopping ban



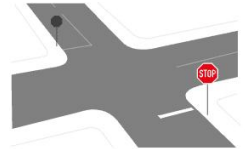
Prohibition of falling
below the specified
minimum distance



End Of A Restricted
Stopping Ban For A
Zone



Pedestrian Crossing



Stop Line



Prescribed minimum
speed



Fahrsstreifen B Fahrsstreifen A

Overtaking prohibited
for all types of motor
vehicles



Overtaking ban for
motor vehicles over
3.5 t



Prohibition of overtaking
single-track vehicles for
multi-track motor
vehicles and motorcycles
with sidecars



Prohibition for vehicles
above the specified
actual height



End of the prescribed
minimum speed

DANGER SIGNS (33)



Danger point



Flight operations



Pedestrian Crossing



Cattle Drive, Animals



Rockfall



Snow or ice



Chippings, Gravel



River Bank



Insufficient
Clearance Profile



Movable bridge



Intersection Or
Junction With Right-
Of-Way



Curve (right)



Double Curve
(Initially Right)



Slope (10%)



Gradient (12%)



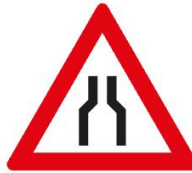
Uneven Road Surface



Risk of skidding or slipping



Crosswind



Narrowed Roadway



One-Sided (Right) Narrowed Roadway



Workplace



Traffic Jam



Oncoming Traffic



Traffic Light System



Pedestrian



Children



Cycling



Wild animals crossing



Railway Crossing



Level crossing with three-lane beacon



Three-Lane Beacon
(About 240 M Before
The Level Crossing)



Two-Lane Beacon
(About 160 M Before
The Level Crossing)



Risk of skidding or slipping



Crosswind



Narrowed Roadway



One-Sided (Right) Narrowed Roadway



Workplace



Traffic Jam



Oncoming Traffic



Traffic Light System



Pedestrian



Children



Cycling



Wild animals crossing



Railway Crossing



Level crossing with three-lane beacon



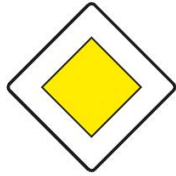
Three-Lane Beacon
(About 240 M Before
The Level Crossing)



Two-Lane Beacon
(About 160 M Before
The Level Crossing)



Right of way (at the next intersection or junction)



Priority Road



End Of The Priority Road



Priority Over Oncoming Traffic



Place Name Sign (Front)



Place Name Sign (Back)



Park



Parking Garage



Start Of A Parking Management Zone



End of a parking management zone



Parking On Sidewalks



Parking and travel



Hikers' Parking Lot



Parking Disc



Beginning Of A Traffic-Calmed Area



End Of A Traffic-Calmed Area



Tunnel



Emergency Stopping
And Breakdown Bay



Highway



End Of The Highway



Motorway



End Of The Motorway



Exit Sign On The
Motorway



Exit Sign On Other
Roads Outside The
Motorway



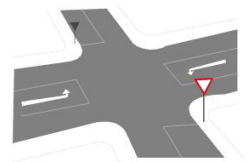
Exit From The
Motorway



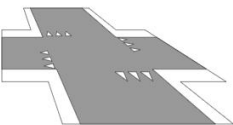
Exit from other
roads outside the
motorway



Guideline



Waiting line



Shark Teeth



Pedestrian Crossing



Cycle Superhighway



End Of The Cycle
Superhighway



Water Protection Area



Traffic Assistant



Dead End



End Of The Highway



First Aid



Police



Telephone



Emergency Call Box



Gas Station



Gas station with LPG



Gas station with natural gas



Motorway Hotel



Motorway Guesthouse



Highway Kiosk



Toilet



Tent And Caravan Site



Tourist Office Or
Information Center



Breakdown
Assistance



Pedestrian
Underpass



Charging Station For
Electric Vehicles



Hydrogen Filling
Station



Motorhome And
Caravan Site



Place Name Sign



Tourist Information



Tourist Route



Tourist information
board



Toll obligation
according to the
Federal Highway Toll
Act



End Of Toll Obligation
Under The Federal
Highway Toll Act



Toll Road



Customs Office



Information Board At
Border Crossing
Points



Color Ring On
Lanterns That Do Not
Burn All Night



License Plate For
Federal Highways



License Plate For
Motorways



Motorway Junctions
(Motorway Exits, Motorway
Interchanges And
Motorway Triangles)



License Plate For
European Roads



Hydrogen Filling
Station



Motorhome And
Caravan Site



Arrow Signs On
Federal Highways



Arrow Signs On Other
Roads



Arrow Signs On
Roads With Less
Traffic Importance



Arrow signs for
specific types of
traffic



Signposts for specific
types of traffic



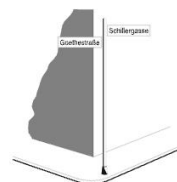
End Of Toll Obligation
Under The Federal
Highway Toll Act



Arrow Signs To
Destinations With
Significant Traffic
Importance



Table Guide



Street Name Sign



Advance Signs
Outside Motorways



Structured Advance Sign Outside Motorways



Advance Sign To The Motorway



Advance Signs For Certain Types Of Traffic



Indication Of Motorway Exit, Motorway Junction Or Motorway Triangle



Reference To Truck Stop In The Immediate Vicinity Of The Motorway Exit



Advance Signs On Motorways



Warning Beacon On Motorways (Three-Lane, Two-Lane, Single-Lane)



Distance Sign On Motorways



Detour Signpost



Announcement or continuation of the diversion



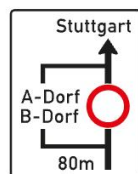
End of diversion



Detour Announcement



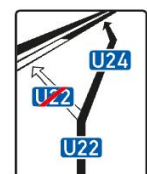
End Of Diversion



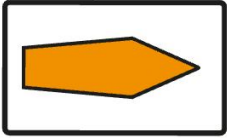
Plan Sketch (For Diversion)



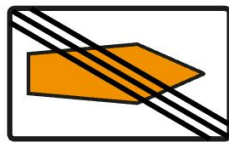
Demand Redirection



Further Demand Redirection



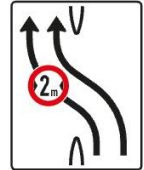
Detour Arrow (Route Recommendation)



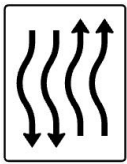
End Of A Route Recommendation



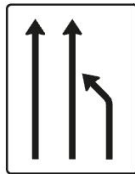
Transition To The Oncoming Lane



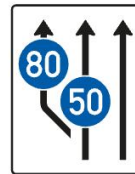
Transition To The Opposite Lane With Narrowed Left Lane



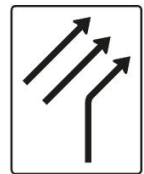
Short Turn With Oncoming Traffic



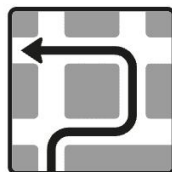
Narrowing (End Of A Lane)



Widening And Specifying A Minimum Speed



Consolidation Of Traffic Flows



Block Bypass

TRANSPORT FACILITIES (14)



Barrier



Bollards



Hachure Beacon



Traffic Cones



Mobile warning board



Mobile warning sign with flashing arrow



Delineator Post (Right)



Delineator Post (Left)



Direction Sign In Curves



circuit board



Guiding Stone



Guide rail with guide beacon

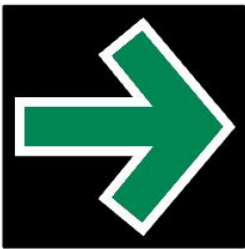


Guide Board With Guide Beacon



Parking warning sign

OTHER CHARACTERS (3)



Green arrow sign (allows you to turn right from the right lane after stopping at the stop line when the traffic light is red)

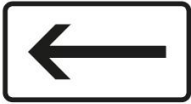


Green arrow sign with restriction to bicycle traffic



Military load-bearing capacity signs on bridges (NATO bridge signs)

TRANSPORT FACILITIES (14)



Direction, Pointing
Left



Direction Of The Danger
Point, Pointing Right



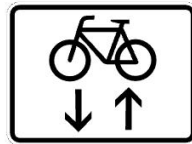
Pedestrians Use The
Sidewalk Opposite



Both Directions (E.G.
Cycle Path)



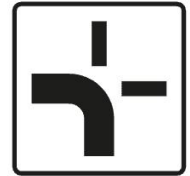
Cyclists cross from
right and left



Cyclists in oncoming
traffic



Length Of A Route
(800 M)



Course Of The Priority
Road At Intersections
(From Bottom To
Left)



After 200 M Distance



Stop in 100 m



Zipper Only In 200 M



Danger sign for
caravans on downhill
stretches with strong
crosswinds on
motorways



Risk Of Accidents



Oil Track



Chippings



Right Of Way Has
Changed



Traffic Routing
Changed



Direction Of The Danger
Point, Pointing Right



Pedestrians Use The
Sidewalk Opposite



Motor Vehicles With A
Maximum
Permissible Mass
Exceeding 3.5 T,
Including Their
Trailers, And Tractors.
Except Passenger
Cars And Buses



Passenger cars



Passenger car with
trailer



E-Bikes



Electric Vehicles



Motorhomes



Small electric
vehicles within the
meaning of the Small
Electric Vehicles
Regulation (eKFV)



Bicycle For
Transporting Goods
Or People – Cargo
Bike



Car sharing



End



Walk Your Bike



Green Wave At XX
Km/H



Severely Disabled
People With Parking
Permit No. ... Free



Cyclists And Residents Free



Inline Skating And Roller Skating Free



Residents Only



Cyclists Free



Mopeds free



Motorcycles, including those with sidecars, mopeds and small motorcycles are permitted



E-Bikes Free



E-Bikes And Mopeds Free



Small Electric Vehicles Free



Passenger cars free



Trucks With Trailers Free



Bus free



Motor Vehicles And Trains That Cannot Or Are Not Allowed To Travel Faster Than 25 Km/H,



Car Sharing Vehicles Free



Taxis Only



Public Transportation Only



Delivery Only



Agricultural And
Forestry Traffic Free



Residents Only



Electric Vehicles Free



Exemption from the
traffic ban according
to Section 40
Paragraph 1 of the
Federal Immission
Control Act



Winter sports
permitted, limited
time (10am - 4pm)



Time Restriction (4
Pm - 6 Pm)



Parking Disc 2 Hours



Parking With Parking
Disc In Marked Areas
2 Hours



Time restriction
(weekdays)



Time Restriction
(6am - 10pm On
Sundays And Public
Holidays)



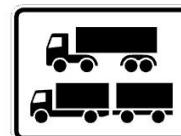
School bus (daytime
use)



Only Severely
Disabled People With
Exceptional Walking
Difficulties And Blind
People



Only Residents With
Parking Permit No. ...



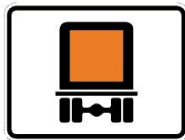
Only Articulated
Vehicles And Trucks
With Trailers



Motor Vehicles And
Trains Up To 25 Km/H
May Be Overtaken



Only Trucks, Buses
And Passenger Cars
With Trailers



Route Ban For The
Transport Of
Dangerous Goods
On Roads



Route Ban For
Vehicles With Water-
Polluting Cargo



Weight (7.5 T)



Only Trucks, Buses
And Passenger Cars
With Trailers



Route Ban For The
Transport Of
Dangerous Goods
On Roads



No Stopping On The
Hard Shoulder



Also Buses And
Passenger Cars With
Trailers (In The Area
Of Truck Controls)